

44

POWER CATAMARAN



 **AQUILA**

44

POWER CATAMARAN

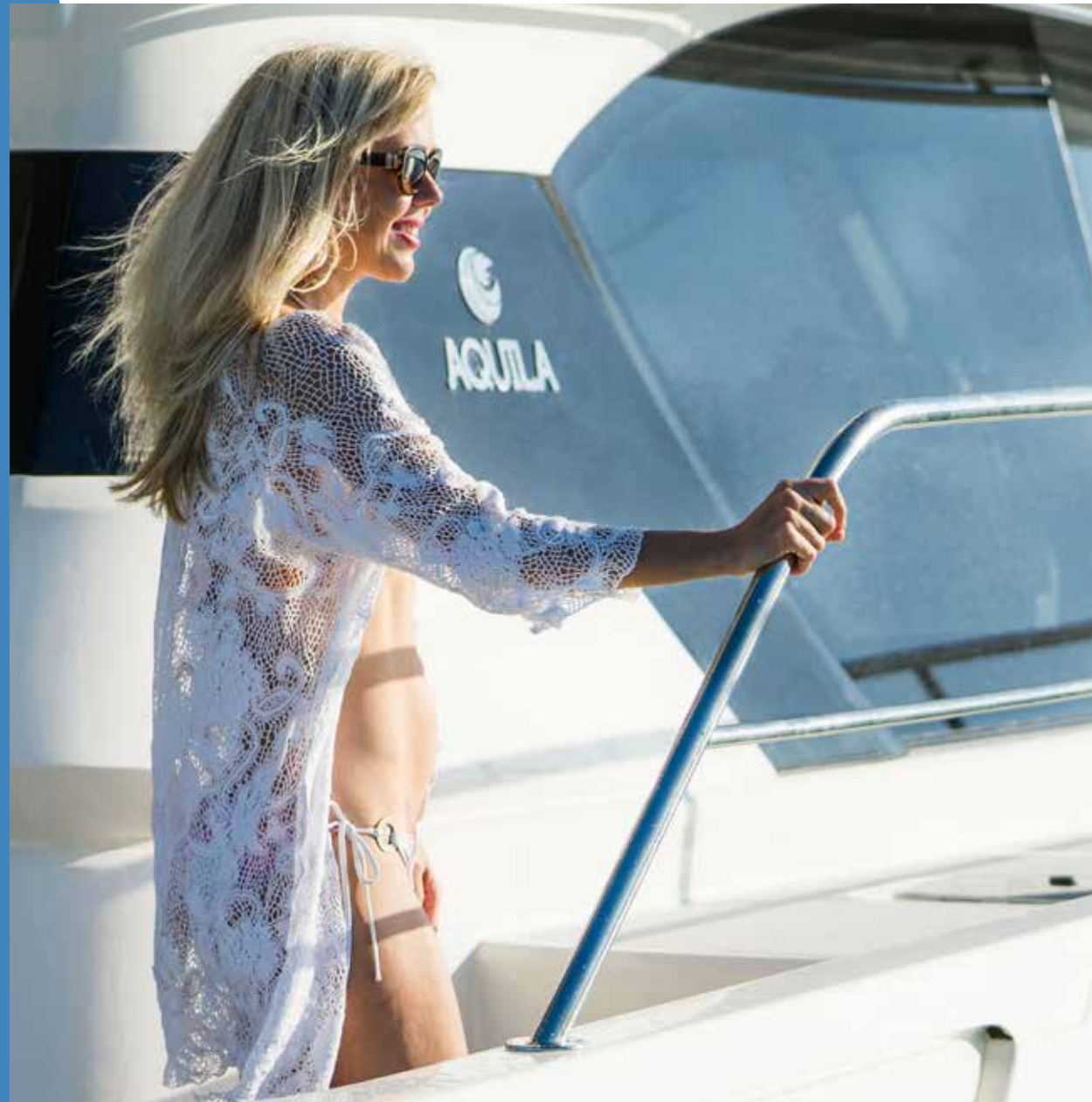
The Aquila 44 is a power catamaran with a fresh evolution of classic boating traditions. Efficiency in design and performance compliment her luxurious, spacious living.

The Aquila 44 is available with 3 or 4 cabin layouts featuring a salon and galley with 360° views and an extensive flybridge.

Customization options are available to meet an array of boating lifestyles.



44 POWER CATAMARAN



**ENJOY
THE
OUTDOORS.**



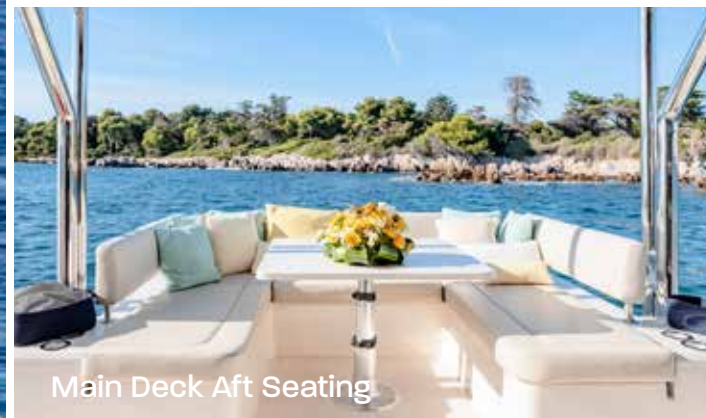
6

AQUILA POWER CATAMARANS

44 POWER CATAMARAN



Helm Station



Main Deck Aft Seating



Flybridge Wet Bar



Exclusive Bridge-to-Bow Steps

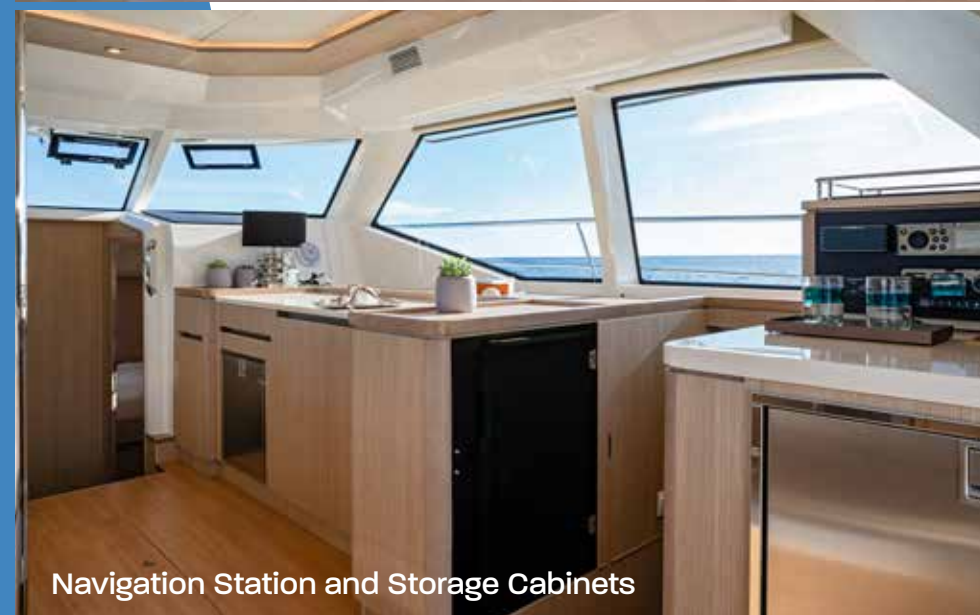


Large Opening Rear Galley Window

**BRIGHT.
SPACIOUS.
INVITING.**



360° View Salon



Navigation Station and Storage Cabinets



Optional Inside Helm Station



Galley Dining



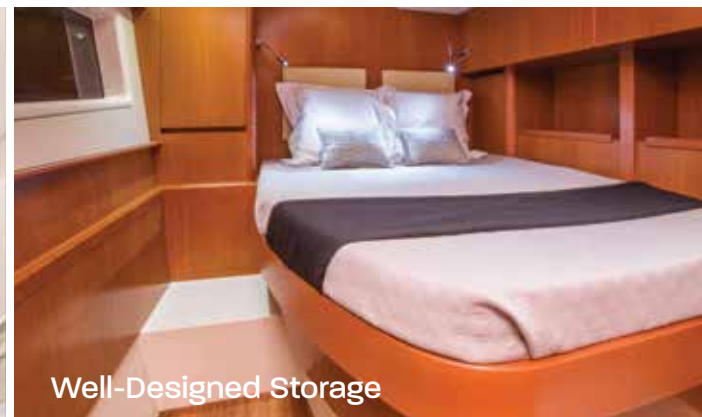
**RELAX.
REFRESH.
RENEW.**

Full-Beam Master Cabin (3-Cabin Model)

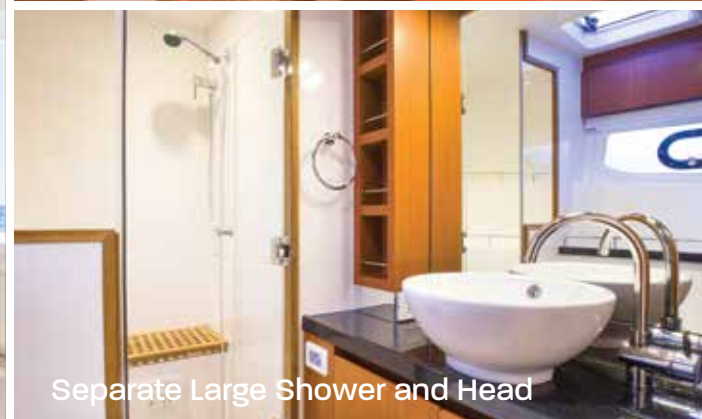
44 POWER CATAMARAN



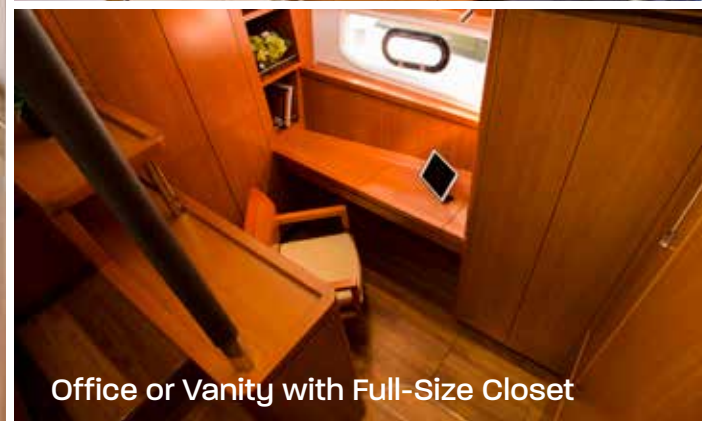
Spacious Guest Cabin



Well-Designed Storage



Separate Large Shower and Head



Office or Vanity with Full-Size Closet



Comfortable Forward Cabins (4-Cabin Layout)

High-Quality Stainless-Steel Hardware



Top-Stitched Upholstery



Custom-Fitted Railings



QUALITY.
INNOVATION.
PERFORMANCE.

Engineered Handrails



SPECIFICATIONS

Length overall w/ swim & protection platform	13.44 M / 44' 11"
Beam overall	6.56 M / 21' 06"
Height above waterline w/ hard top	5.70 M / 18' 08"
Draft without sacrificial skegs	1.0 M / 3' 03"
Draft with sacrificial skegs	1.16 M / 3' 10"
Light displacement	15,900 KG / 35,053 LB
Fully loaded displacement	22,000 KG / 48,500 LB
Fuel tank	1,100 L / 290 GAL
Water tank	680 L / 180 GAL
Holding tank	240 L / 63 GAL
CE certification	A:8, B:12, C:14, D:21
Propulsion	

VOLVO PENTA DIESEL ENGINES W/ V DRIVE GEARBOX
(165 KW / 2X D4 225 HP)

The specification measurements are approximate and subject to variance.
Actual color samples may vary slightly from digital representation.



CUSTOMIZATION OPTIONS

CABINETRY



WILD CHERRY



OLIVEWOOD



AGED ASH

FLOORING



TEAK



LIGHT CHERRY



ROSEWOOD

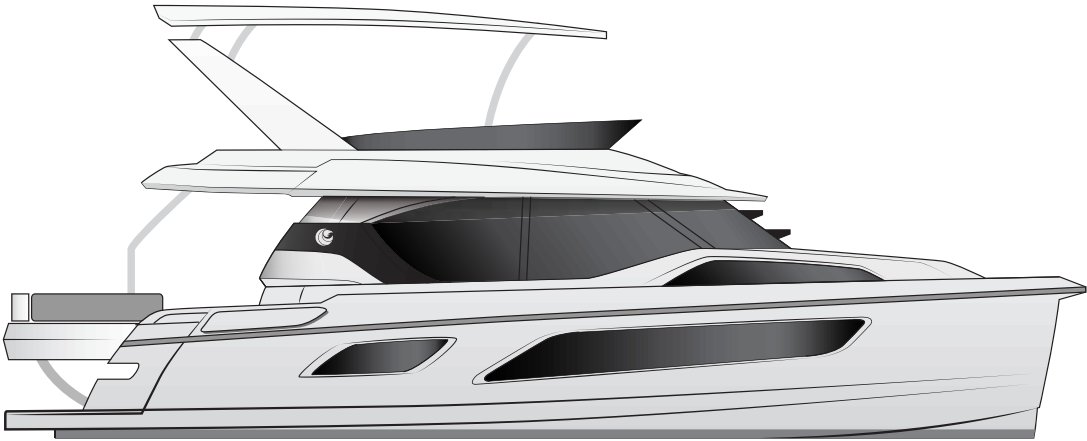
COUNTER TOPS



BLACK QUARTZ



VANILLA CORIAN



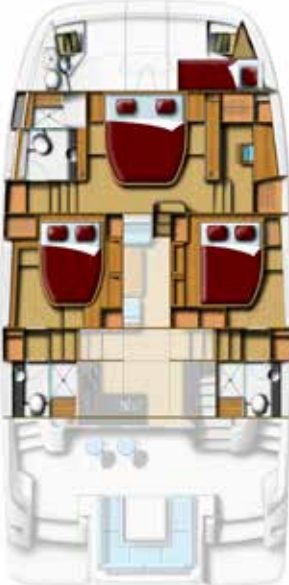
MAIN DECK



FLYBRIDGE



3 CABIN
3 Heads \ 4 Showers



3 CABIN + CAPTAIN'S
QUARTERS
3 Heads \ 4 Showers



4 CABIN + CAPTAIN'S
QUARTERS
4 Heads \ 5 Showers



With over 40 years of manufacturing experience and the collaboration of multiple award-winning firms and designers, Aquila Power Catamarans is the recognized leader for innovation, quality and performance in this growing category of pleasure boats.





Copyright © 2019 Aquila Boats. All rights reserved. Photography by Nicolas Claris and Billy Black.