



SEAWIND 1260

SEAWIND
CATAMARANS



The new Seawind 1260 has been developed from the popular and award winning Seawind 1160 and Seawind 1250.

It retains all the legendary sailing and performance features whilst also offering unsurpassed luxury to delight everyone. This is a true offshore, go anywhere performance cruiser - equally at home cruising oceans or relaxing in the bay.

A COMFORTABLE Indoor/Outdoor LIFESTYLE

The Australian indoor/ outdoor, open lifestyle is entrenched in this new design, with an unbeatable living area complimented with brilliant natural ventilation, protected cockpit lounge, and social helm seats putting the skipper in control as well as in the conversation. Best of all, you can enjoy what many cats compromise on... "visibility" for the skipper AND crew, with 360 degree views from the helm and saloon seats all within the protection of the fiberglass coachouse and targa roof.



The unique saloon day bed offers a great place to relax away from the sailing action.



The new alfresco aft entertaining area is a perfect place to relax after a hard days sail. Complete with stow away BBQ, sink and icebox, this area truly offers a relaxed outdoor lifestyle.

But it is not all about relaxing. The Seawind 1260 offers a great degree of visibility from the twin helm, whilst also giving 100% protection from the elements. All sail controls are lead back to the twin helm, and offer easy ergonomic access for the short-handed sailor.



BUILT TOUGH for serious sailors

The 41ft 1260 is Seawinds' ultimate mid-sized ocean cruiser, Seawind designers have made no compromises in safety, strength and offshore performance. This comfortable yet robust cruiser is the first and foremost world class oceangoing yacht, placing practicality, ergonomics and construction strength above all else.



Singlehanded SAFETY

With all sheets and halyards run aft to the dual protected helms, the 1260 can easily be singlehanded. The skipper is protected from the elements and has no dangerous steps to climb down to enter the cockpit, offering the visibility of a modern catamaran with the protection of a pilothouse yacht.



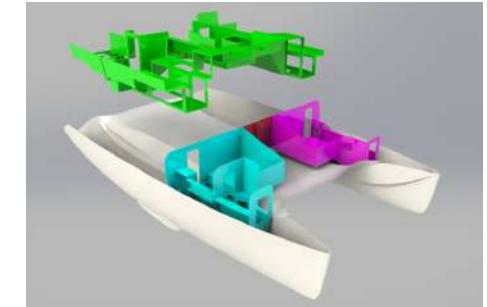
OPEN design

Seawind's unique Tri-Fold door system allows the saloon and cockpit to become one large combined space. This makes the boat feel more like a 48 footer than a 41. The 1260 is a boat for all seasons. The huge open saloon space and opening saloon windows provide excellent natural ventilation, perfect for balmy tropical cruising whilst the ability to enclose the space around the cockpit makes her equally adept in cold climates.



Offshore PEDIGREE

Great wingdeck clearance and narrow hulls allow the 1260 to slice through waves without "hobby-horsing". Unlike the other 40' catamarans, the 1260 performs admirably in the worst offshore conditions. With lower freeboard in the bows, she produces less windage, and allows for pointing angles as low as 34 degrees.



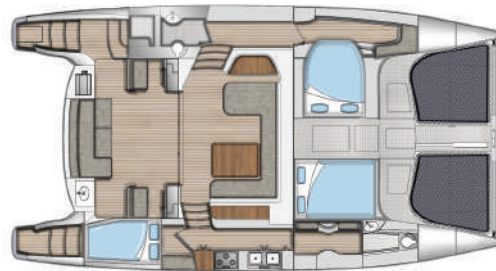
Built TOUGH

Seawind uses a unique modular composite furniture installation which makes for a yacht of supreme stiffness and strength. A full Vinylester infused hull with integral composite bulkheads is fibreglassed, internally and in its entirety, to the deck. This provides superior structural reliability, and in practical terms, peace of mind-preventing the awful creaks and groans often found on new sailing yachts.

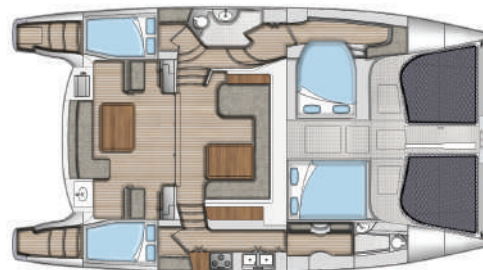
“In 12kts of breeze when many other boats are motoring the 1260 will easily do better than half wind speed.”

ANDREW CRAWFORD





Owners version
3-cabin



Charter version
4-cabin

SPECIFICATIONS

- Overall Length 41ft / 12.45m
- Beam 22'3" / 6.8m
- Draft 3'8" / 1.16m
- Displacement 18,165lbs / 8.2 tonnes
- Underwing Clearance 2'6" / 0.8m
- Steering Twin Helms Cable Steering
- Diesel Sail Drives 2 x 29hp Yanmar
- Fuel 126 US gallons / 480 litres
- Fresh Water 185 US gallons / 700 litres

The Seawind 1260 is the latest in a great Seawind lineup of powerful, safe and luxurious offshore performance cruisers. For 35 years Seawind has specialised in meeting the demand of true sailors.

“This is how cruising should be”

Richard Ward - Managing Director

