



SEAWIND 1160 LITE

SEAWIND
CATAMARANS

The Seawind 1160 Lite is an evolution of the award winning Seawind 1160. Proven as one of the most versatile multihulls on the market, the 1160 Lite is furnished with a modern interior and is ideal for both family cruising or single handed sailing in all conditions.

Background

In 2004 Seawind Catamarans launched the 38ft Seawind 1160... a ground breaking and innovative design that gained worldwide acclaim for its clever layout and use of space, ergonomic design and efficient short-handed sailing performance. With well over 100 Seawind 1160s launched and sailing the world, the design has been well proven, from crossing the world's largest oceans to chartering in the beautiful locations such as the Whitsundays, Thailand and Caribbean.

Now with the Seawind and Corsair Marine design teams joining forces, a whole new approach is being taken to this classic design.

Live, explore and discover on a Seawind

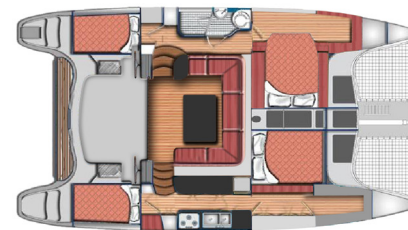
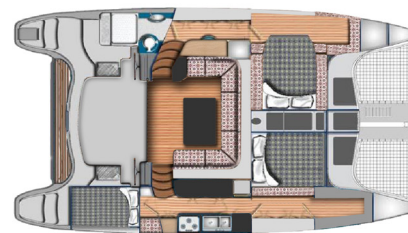
The Seawind 1160 design is the perfect balance between comfort, safety and short-handed sailing design. With all the comforts of a luxury onwater apartment, you can easily live aboard as a couple or family, but single handedly sail in safety and at speed to unlimited destinations found only by sea.



The Seawind 1160 LITE also changes from the traditional diesel sail drives to lighter 20hp Honda (or 25hp Yamaha) outboard engines with electric tilt. The cockpit hardtop is full width, allowing more walking space or additional solar panels.

Benefits of Outboards

- Significant weight reduction
- No drag when sailing
- No growth on legs
- No electrolysis
- Low maintenance & low replacement costs
- Fuel stored external to the cabin
- Increased internal storage



Dimensions

- Overall Length 38ft / 11.6m
- Waterline Length 37ft / 11.3m
- Beam 21'4" / 6.5m
- Draft 3'1" / 1.1m
- Displacement 15,400lbs / 6.5 tonnes kgs
- Underwing Clearance 2'4" / 0.73m
- Steering Twin Helms Cable Steering
- Power Tilt Outboards 2 x 20hp Honda
- Fuel 52 US gallons / 200 litres
- Fresh Water 185 US gallons / 700 litres
- Holding Tanks 34 US gallons / 130 litres





Seawind 1160 LITE

The Seawind 1160 LITE has a new sleek interior design and fitout with lightweight and stylish timber-look laminate surfaces, a new contemporary neutral colour palette has been specified by Seawind's interior stylist. The upholstery is modern, angular, yet practical with a range of hard wearing interior fabrics to choose from.

The layout offers incredible use of space, with a unique open flow from the cockpit into the saloon and down to the cabins and a forward wet locker. With 360 degree views and plenty of natural light down below, you have a great view point from any angle on this design.



The Seawind designs are the original “Open Layout” and the Seawind 1160 LITE offers an enormous indoor / outdoor saloon and cockpit made possible only by Seawind’s famous tri-folding door system, allowing you security and warmth, or open airiness.



“ I’m really happy with the boat and it sails incredibly well. We were sailing at 9.5 knots in 20 knots of breeze and peaked at 11.5 knots. I was also very pleased how the motors handled the sea. ”

Mark Ridsdale,
Owner Seawind 1160 LITE “Reality”

SEAWIND
CATAMARANS

DEALER:

MANUFACTURING HEADQUARTERS

7 Go O Moi ■ PHU THUAN Ward
District 7 ■ Ho Chi Minh City ■ Vietnam

Phone: +84 28 3873 3620

Fax: +84 28 3873 3621

info@seawindcats.com

www.seawindcats.com

