

SEAWIND
CATAMARANS



SEAWIND 1370



SEAWIND
CATAMARANS

SEAWIND 1370

The Seawind 1370 brings about a generational leap in multihull design. Adopting all the best features of catamaran designs over the past decade and incorporating countless innovations in hull dynamics, structural engineering, exotic composite materials and manufacturing methods, where other Seawinds have been built tough - this 1370 will be bulletproof.

Employing countless thousands of man-hours in hull design and optimization, no expense has been spared to deliver the perfect balance of performance and comfort, making this 45' blue water cruiser the perfect go anywhere, liveaboard cruising catamaran.

We have taken the feedback of hundreds of existing Seawind owners and sailors to boot, combined with the practical sailing experiences and build principles of our senior shipwrights and boat builders and have perfectly merged this experience with the skillsets of our next generation, naval architects and CFD (computational flow analysis) studies to improve on the already proven hull performance of the Seawind range. The iconic reverse bows aren't just an impressive show piece, they are core to the 1370's design, the wave piercing bows immensely improve comfort and safety of the 1370 by reducing pitching and producing a smoother more stable ride.





PERFECT BALANCE OF PERFORMANCE & LIFESTYLE

The impressive reverse bows on the Seawind 1370 aren't just a showpiece. They are central to the 1370's design by way of targeting the wave-piercing aspect to their effectiveness to reduce pitching, provide enhanced comfort and safety and produce a smoother more stable ride. But for cruisers to realise those performance advantages, we believe sailing ergonomics are of upmost importance. This single-

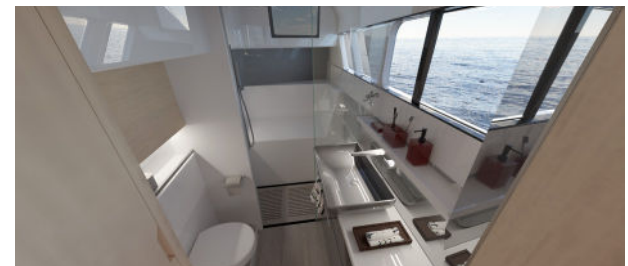
level catamaran boasts Seawind's indispensable twin protected helms which offer skippers complete protection and 360 degree visibility, while still being in easy reach of anyone in the saloon or down below. Sheets, reefs and halyards are all led aft to electric sheet winches at the helms making rough, offshore passages more comfortable and achievable from the safety of the dry and protected cockpit.



BLUEWATER CRUISING

IN UNRIVALLED COMFORT

Open-plan living, with saloon, galley, cockpit and helms all on one level, means this catamaran boasts incomparable open living area. But not content with ticking all of the boxes, the 1370 advances one step further with another Seawind first - the innovative new breakfast (or evening) bar with integrated seating. It will serve as a coffee area in the morning when you're ready to get going, and make taking that first rest after a day of fast sailing a truly simple pleasure. The 1370 includes an integrated cockpit BBQ and sink, as well as foredeck and cockpit lounges - all of the modern necessities, while employing true boatbuilding craftsmanship at every level. The 1370 is fitted with exquisitely crafted carpentry throughout, complimented by a saloon that is bathed in bright natural light and ventilating airflow thanks to Seawinds famed Tri-fold door and essential forward opening window system. The comprehensively equipped galley comes standard with bar fridge, large 130l chest freezer, and an abundance of storage, making it ideal for extended cruising and responding to couples with varying needs for toys and equipment on their own unique voyage.





OWNERS VERSION

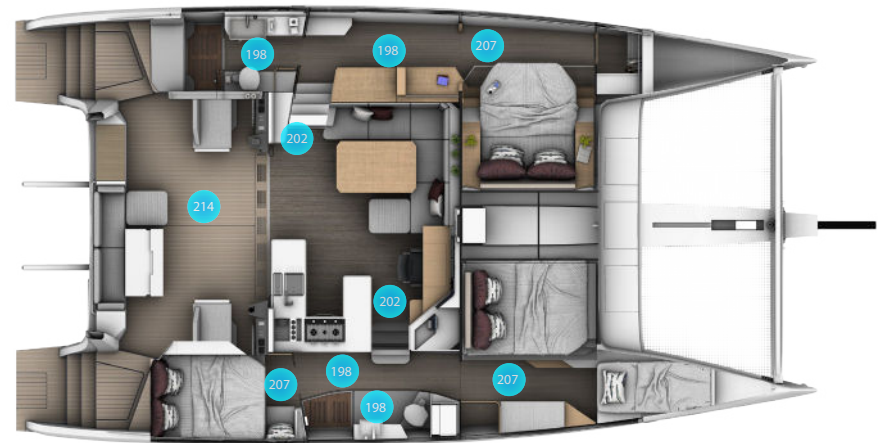
3 CABIN / 2 HEAD (SLEEPS 7 + 2)

SPACIOUS STORAGE AND HEADROOM

EXCELLENT INTERIOR VOLUME

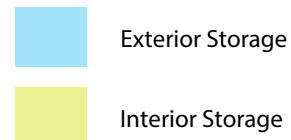
EXTENSIVE HEADROOM

Understanding the importance of headroom in the cabin of a boat to many. Seawind 1370 has a generous space above your head. This comfortable new cruiser offers a large, airy indoor space with considerable headroom to optimize the liveaboard comfort.



MULTIPLE COMPREHENSIVE STORAGE AREAS

The Seawind 1370 is designed to maximize the exterior and interior storage. The storage optimization allows everything to be kept safe and avoid breakage, mold, mildew to accompany your cruising voyage.



SAILPLAN & SPECS

Overall Length	45' / 13.7 m
Waterline Length	45' / 13.7 m
Beam	24'11" / 7.6 m
Draft	4'3" / 1.3 m
Headroom	6'10" / 2.1 m
Displacement	24,250 lbs / 11,000 kg
Underwing Clearance	2'9" / 0.85 m
Diesel Sail Drives	2x Yanmar 40hp / 30kw
Fuel	155 US gal / 600 litres
Fresh Water	155 US gal / 600 litres
Mainsail	861 sq ft / 80 sqm
Jib	387 sq ft / 36 sqm
Air Draft	70'10" / 21.6 m







www.seawindcats.com
info@seawindcats.com